

CHORD PROGRESSION FOR OPTIONAL JAZZ IMPROVISATION AUDITION

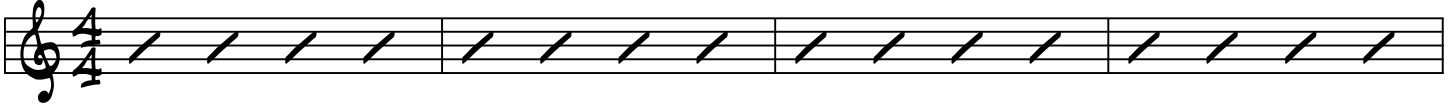
CONCERT KEY (FALL 2017)

SWING - QUARTER = 200

E^bMAJ⁷

D^{MIN}7^{b5}

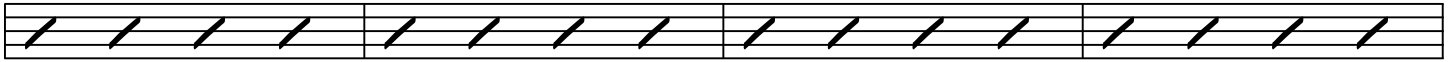
G^{7(b9)}



C^{MIN}7

B^bMIN⁷

E^b7



5

A^bMAJ⁷

D^b7

E^bMAJ⁷

C^{MIN}7

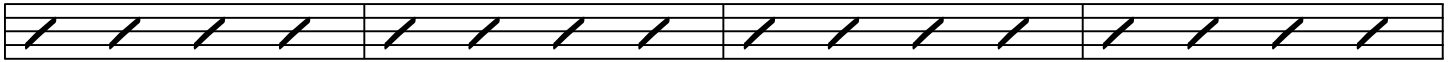


9

F⁷

F^{MIN}7

B^b7



13

E^bMAJ⁷

D^{MIN}7^{b5}

G^{7(b9)}

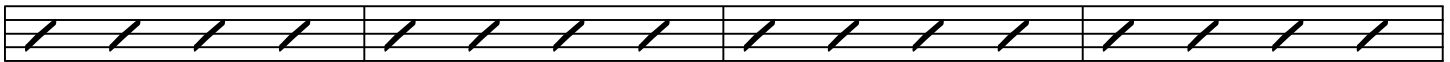


17

C^{MIN}7

B^bMIN⁷

E^b7



21

A^bMAJ⁷

D^b7

E^bMAJ⁷

A^{MIN}7^{b5}

D^{7(b9)}



25

E^bMAJ⁷

A^b7

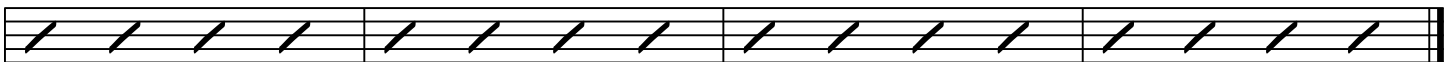
G^{MIN}7

C⁷

F^{MIN}7

B^b7

E^bMAJ⁷



29